

# IMPORTANT NOTES

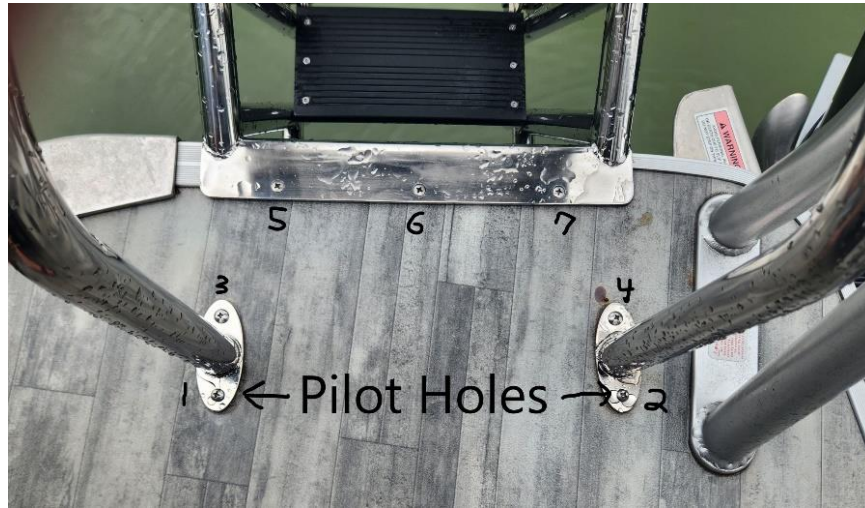
- **Adult supervision is required when removing or putting steps into water. Use extreme caution to avoid getting pinched or hit by ladder when rotating to / from water. Do not let people or pets underneath ladder when attaching or detaching the ladder**
- If your pontoon has a weak pontoon cap at the rear, some reinforcement may be necessary to hold the weight of the ladder and users. Not all pontoon caps are the same.
- There are (7) long anchor screws, washers and locknuts supplied to attach the ladder to the deck on your boat. Due to varied installation types and deck thicknesses, you may want to use different length bolts for your application. Use 1/4-20 stainless steel tapered screws, washers, and lock nuts for the best results.
- Always face the ladder when using it, holding onto handrails.

## Installation Notes

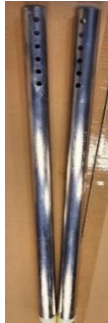
- A skilled handyman is recommended for installation. The pontoon ladder must be mounted firmly to the pontoon deck. Installer must make sure that the deck structure the ladder is mounted to is sturdy and secure. For example, if mounting to a wooden deck, the boards that the mounting brackets are attached to must also be securely attached so that the boards themselves do not pull up or separate from the pontoon deck.

## READ ALL INSTRUCTIONS PRIOR TO INSTALLATION

1. The ladder has been shipped in two separate boxes. You need to remove both sections and join them together at the hinge. Hardware is provided for this, but we recommend using Loctite thread lock.
2. To install the ladder to the boat, first place the top section of ladder against the back of the pontoon, centering the ladder over the end of the pontoon log as best possible.
3. With the ladder in position, drill two pilot holes through the front holes of each side of the loop handles facing towards the front of the boat (see pictures with holes 1 & 2). Place (2) of the long screws through these two pilot holes to hang the ladder - Do not tighten yet. It is necessary to adjust the standoff legs prior to tightening. Now drill the remaining (5) holes (see picture with holes 3-7) needed to attach the upper section of the ladder to the deck – don't place the remaining (5) screws in yet since it is easier to install the standoff legs with these out.



4. There are (3) standoff legs provided in the package but only (2) are necessary for installation. These standoff legs rest against the back of the pontoon log to provide the necessary support for the ladder. (1) of the standoff legs is offset (not pictured) for boats where the ladder does not center exactly behind the pontoon log. You will only use (2) of the provided standoff legs as appropriate for your installation. These standoff legs may be too long for your application, so you may have to cut them to appropriate length for your boat. Make sure beveled end of nylon plugs on the standoff legs match angle of the pontoon log. Adjust and install (2) of the standoff legs onto the ladder frame ensure that the legs each rest firmly against the pontoon log and secure in place with (2) of the 1/4" bolts, washers, and locknuts.



5. Now you can install and tighten the remaining (5) screws. Install washers and locknuts for all (7) screws and tighten. At this point, the upper section of the ladder should be rigid.
6. Install the remaining steps to the lower section of the ladder using the same procedure as in step 2, but do not tighten yet.



7. Attach the lower section of the ladder to upper section of ladder using the (2) pivot bolts and nut – do not forget to use thread adhesive.



8. If not already installed, attach the (2) ladder snaps to upper section as pictured.



9. Tie rope or strap to the bottom step and to the loop handles for use pulling the lower section up and out of the water; this makes it easier than leaning down and pulling the lower ladder section up by hand.